

Composite water-meter TYPE 620



MID certificate



- Water-meter ND 15 or ND 20
- Composite body, dry dial head
- Suitable with drinking water
- High accuracy and repeatability
- High resistance to aggressive, waste water

APPLICATIONS

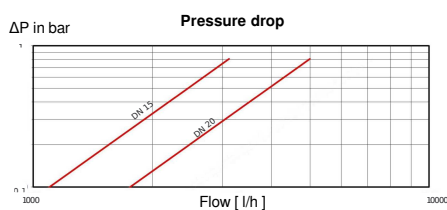
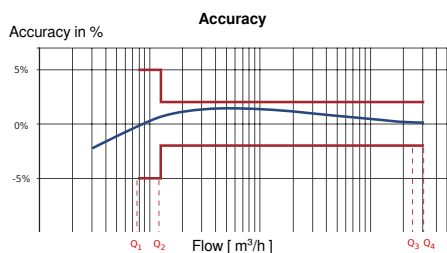
This water-meter is designed for potable or demineralized water as well as polluted water (by corrosion, scaling, particles, etc.)

DESCRIPTION

- The water-meter Type 620 is a highly metrologic accurate meter.
- Designs of the measuring chamber and rotary piston allow even a drip counting.
- The Type 620 maintains its metrologic features throughout its lifetime.
- Readability is ensured with the plastic totalizer equipped with a wiper and with the glass-metal totalizer avoiding any condensation.
- The water-meter 620 easily fits into your pipings.
- Its anti-fraud design and robustness guarantee a long service life for the Type 620.

Accuracy and reliability:

With the design of the measuring chamber, the Type 620 has an extremely low start-up flow. It is supplied with a metrological lead compliant with MID 2014/32 / EU regulations and a ratio Q3/Q1 of 400. The Type 620 is protected against solid materials present in the water by a tubing strainer and a filter. The finest particles can pass through the meter without damaging it: a patented system prevents particles from becoming trapped between the piston and the measuring chamber. The gears are located in the dry totalizer, which eliminates any risk of blocking by particles. The Type 620 water-meter maintains metrologic features throughout its lifetime, even under the most difficult conditions.



Readability:

The display on 8 reading rollers (5 for cubic metres and 3 for litres) and 1 pointer, guarantee a perfect readability. The resolution is 0.05 litres. The totalizer has a central disc allowing to visualize very low flow rates, thus, showing a possible downstream leak. The dial window is equipped with a wiper for optimum readability in all circumstances. The Type 620 can operate in any position, and its rotary dial can be rotated along 350°. This ensures easy reading regardless of the conditions of use. As an option, the water-meter can be supplied with a waterproof glass-to-metal totalizer (IP 68).

HRI pulse output option:

The totalizer is ready to assemble an HRI pulse output accessory. This device reproduces the mechanical index of the totalizer by detecting each rotation of the counter. It records both direction flows and therefore ensure an accurate measurement. It is an essential option for a remote reading and data transmission. Using the deciliter needle to activate the HRI provides a resolution of one or ten litres per pulse.

BAMO INTERNATIONAL

22, Rue de la Voie des Bans · Z.I. de la gare · 95100 ARGENTEUIL

Tel +33 (0)1 30 25 83 20 Web www.bamo.eu

Fax +33 (0)1 34 10 16 05 E-mail export@bamo.fr

Composite water-meter
TYPE 620

05-06-2020

D-786.02-EN-AB

DEB

786-02/1

TECHNICAL FEATURES

Metrologic performances according to MID Directive

Nominal diameter	ND 15	ND 20
Permanent flow Q3 [m ³ /h]	2.5	4
Ratio R = Q3/Q1	40 / 80 / 160 / 315 / 400	
Maximum flow Q4 [m ³ /h]	3.125	5
Minimum flow Q1 [l/h]	6.25	10
Transition rate Q2 [l/h]	10	16

Dimensions (mm)

Nominal diameter	ND 15	ND 20
Length L	170	190
Width D	87	97.2
Total height H	142.6	149
Total height H1 with HRI	161.5	167.9
Distance h	18.95	21.5
Fittings	G 3/4" B	G 1" B
Mass [kg]	0.6	0.68

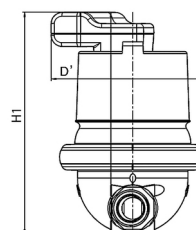
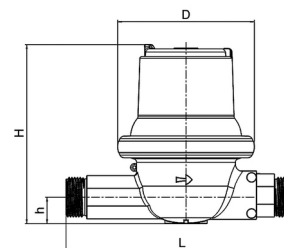
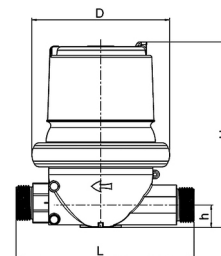
CE certificates

In conformity with:

- 2014/32/EU (MID)
- OIML R49:2013
- EN 14154:2005+A2:2011
- ISO 4064:2014

Food industry agreements:

ACS (F) - KTW/DVGW (D) - WRAS (UK) - Hydrocheck (B) - KIWA ATA (NL)



Metrologic features

Nominal flow (m ³ /h) - Nominal diameter		2.5 - ND 15	4 - ND 20
Flow range (m ³ / h)	Q1	0.00625	0.010
	Q2	0.010	0.016
	Q3	2.5	4
	Q4	3.125	5
	Q2 / Q1	1.6	
Accuracy	Q3 / Q1	400 → (other Q3/Q1 on request)	
		± 2 % (Q2<Q<Q4) Water at temperature = or < 30 °C	
		± 3 % (Q2<Q<Q4) Water at temperature > 30 °C	
Temperature limits		±5 % (Q1 ≤ Q ≤ Q2)	
Pressure drop (MAP)		0,1...50 °C	
Pressure drop ΔP		0.3 bar (0.03 Mpa) - 16 bar (1.6 Mpa)	
Environmental class		0.63 bar (0.063 MPa)	
Mechanical conditions		I	
Climatic conditions		M2	
Electromagnetic conditions		5...70 °C	
		E2	

CODE NUMBERS AND REFERENCES

Code	Reference	Description
786 100	620 - DN 15	Water-meter 10 l/h up to 3.125 m ³ /h - Nominal 2.5 m ³ /h
786 110	620 - DN 20	Water-meter 16 l/h up to 5 m ³ /h - Nominal 4 m ³ /h
786 090	HRI 10L	Pulse output accessory 10 litres per pulse
786 091	HRI 1L	Pulse output accessory 1 litre per pulse

BAMO INTERNATIONAL

22, Rue de la Voie des Bans · Z.I. de la gare · 95100 ARGENTEUIL

Tel +33 (0)1 30 25 83 20 Web www.bamo.eu

Fax +33 (0)1 34 10 16 05 E-mail export@bamo.fr

Composite water-meter
TYPE 620

05-06-2020

D-786.02-EN-AB

DEB

786-02/2