

## VARIABLE AREA FLOW METERS

### K-500G SERIES - GLASS ROTAMETER

Flow Measurement  
& Monitoring



#### DESCRIPTION

K-500G series glass rotameter consist of glass tube, float, top and bottom nuts and a stainless steel body. It's easy to install, with optional fittings - tri-clamp. The flowmeter is used for applications such as semi-conductor chemicals, etc.

#### FEATURES

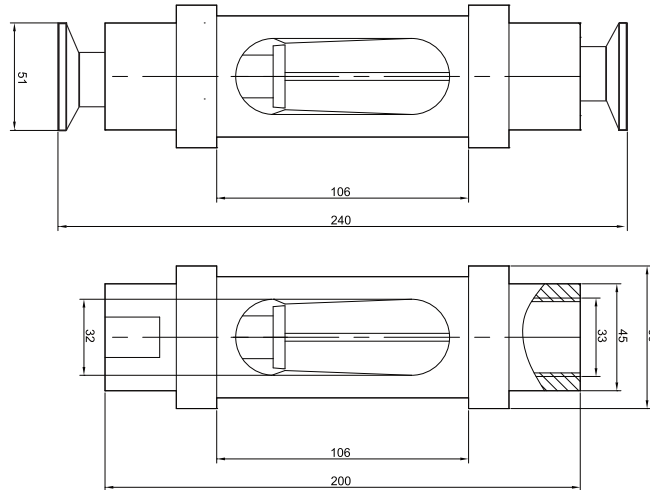
- ✓ Temperature limit:  $\leq 100^{\circ}\text{C}$
- ✓ Working pressure:  $\leq 0.6\text{MPa}$
- ✓ Accuracy:  $\pm 2.5\%$
- ✓ Alarm switch is optional

#### TECHNICAL FEATURES

Model	Measuring Range		Thread (Female) BSP/NPT	Tri- clamp	Weights (kg)
	Water (L/min)	Air (NL/min)			304SS
K-5011G	1-10	40-400	3/4"	ø19	2.5
K-5012G	2-20	60-600			
K-5013G	3-30	90-900		ø25	
K-5014G	4-40	120-1200			
K-5015G	5-50	150-1500	1"	ø38	
K-5016G	12-60	400-1800			
K-5017G	20-100	600-3000			



## DIMENSION/DRAWING



## CODES AND REFERENCES

