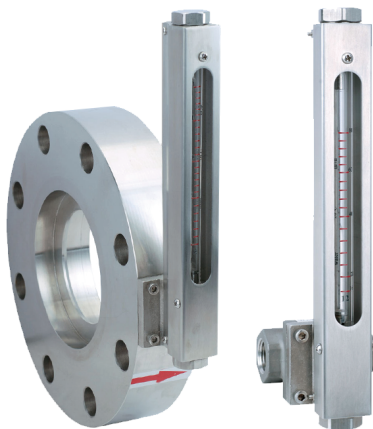


## ORIFICE PLATE FLOW METER

### KF600 SERIES

Flow Measurement  
& Monitoring



#### FEATURES

- ✓ Suitable for liquids and gases
- ✓ High precision
- ✓ Wide application
- ✓ Built-in isolation valve option for maintenance purpose
- ✓ No restriction on installation orientation
- ✓ User friendly, easy maintenance.
- ✓ SPAN approved product

#### DESCRIPTION

The KF600 series of orifice plate flowmeter is intended for measuring and monitoring fluid or gases media of any type.

KF600 series orifice plate flowmeter operates according to the proven differential pressure flowmeter theory with simple structure, work reliable, wide application, high precision, and convenient installation. This series of all polyurethane and stainless steel flowmeter provide with scale in local field display.

A built-in isolation valve is available as option for maintenance purpose. Three connection type available: threaded, clamp-on and flange spool-piece.

#### TECHNICAL FEATURES

<b>Diameter</b>	DN15 - DN300
<b>Pipe material</b>	Polyurethane (PU) / SS304
<b>Connection</b>	Wafer clamp-on / Threaded Type / Flange Type
<b>Medium</b>	Liquids / Gases
<b>Display indicator</b>	Flow rate field display
<b>Accuracy</b>	±2.5% M.V
<b>Op Temperature</b>	0 to 60°C (PU); 0 to 120°C (SS304)
<b>Op Pressure</b>	10 bar max
<b>Power Supply</b>	Not required
<b>Installation orientation</b>	Vertical / Horizontal

I-SYSTEM MEASUREMENT  
[www.ismesb.com](http://www.ismesb.com)



ORIFICE PLATE FLOW METER  
KF600 SERIES  
I-SYSTEM

10-2023

110002

I-SYSTEM

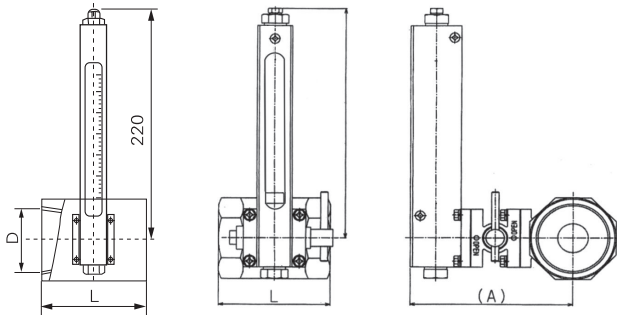
110/002

### MEASURING RANGE

DN mm	Size PSP	Measuring Range	
		Water (m <sup>3</sup> /h)	Air (Nm <sup>3</sup> /h)
10	3/8"	0.1 - 0.5	0.8 - 4
15	1/2"	0.2 - 1	2 - 10
20	3/4"	0.5 - 2.5	5 - 25
25	1"	1 - 5	8 - 40
32	1-1/4"	1.4 - 7	12 - 60
40	1-1/2"	2 - 10	18 - 90
50	2"	4 - 20	35 - 175
65	2-1/2"	7 - 35	60 - 300
80	3"	10 - 50	80 - 400
100	4"	18 - 90	160 - 800
125	5"	25 - 125	250 - 1250
150	6"	40 - 200	350 - 1700
200	8"	70 - 350	600 - 2800
250	10"	100 - 500	900 - 5000
300	12"	180 - 900	1600 - 7800

### DIMENSION/DRAWING

#### Threaded Type



DN (mm)	Pipeline Material SS304		
	L	A*	Weight (kg)
10	70		0.5
15	70		0.43
20	70		1.01
25	70		1.2
32	70	120	1.4
40	80	120	1.6
50	80	130	2.3
65	80	140	3.1
80	90	145	4.3
100	100	160	6

\*A reduce 52mm without valve

I-SYSTEM MEASUREMENT  
www.ismesb.com



ORIFICE PLATE FLOW METER  
KF600 SERIES  
I-SYSTEM

10-2023

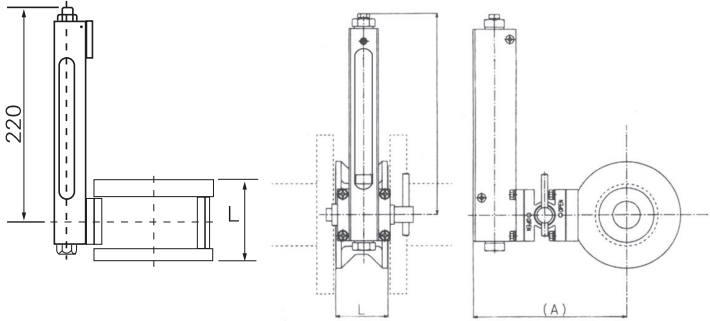
110002

I-SYSTEM

**110/002**

**DIMENSION/DRAWING**

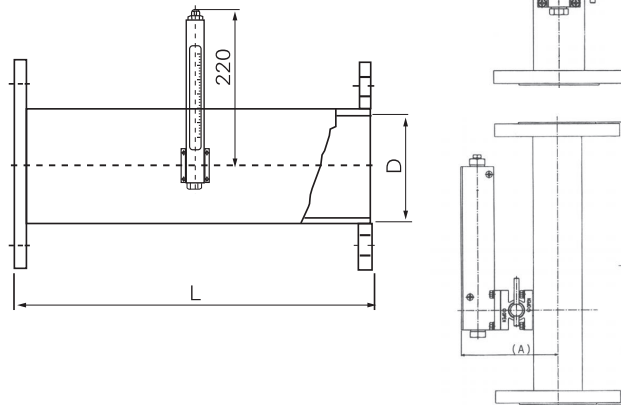
**Wafer Clamp-on Type**



DN (mm)	Pipeline Material SS304		
	L	A*	Weight (kg)
10	50	137	2.5
15	50	140	2.7
20	50	145	2.8
25	50	150	3
32	50	165	4
40	50	170	5.4
50	50	178	6.1
65	50	190	7.3
80	50	195	9.3
100	50	200	10.3
125	50	220	11.3
150	50	240	14
200	50	270	15
250	50	295	16
300	50	320	17.5

\*A reduce 52mm without valve

**Flange Type**



DN (mm)	Pipeline Material SS304		
	L	A*	Weight (kg)
10	520	-	-
15	520	-	-
20	520	-	-
25	520	-	-
32	520	-	-
40	520	138	7.1
50	520	143	8.5
65	540	150	11.4
80	540	157	12
100	540	168	15.5
125	540	180	20
150	540	193	27
200	540	218	35
250	540	242	50
300	540	268	61

\*A reduce 52mm without valve

I-SYSTEM MEASUREMENT  
www.ismesb.com



10-2023

ORIFICE PLATE FLOW METER  
KF600 SERIES  
I-SYSTEM

110002

I-SYSTEM

**110/002**