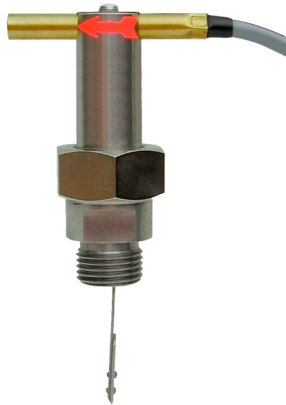


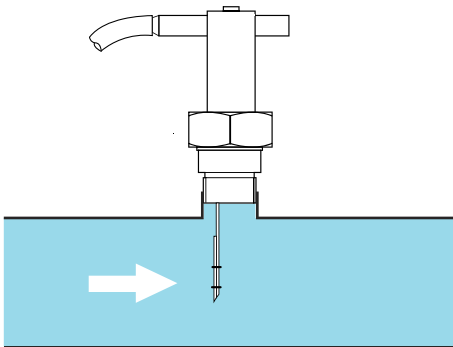
Paddle flow controller CDP



CDP 10 to CDP 50



CDP 52



In operation

- 1 Reed contact N.O. / N.C.
- Stainless steel or brass versions
- Low pressure drop
- Fittings: On tee up to ND50 or BSP 1/2"

APPLICATIONS

Detection of presence or absence of flow of a liquid in a pipe under pressure. The liquid must be free of magnetic particles.

DESCRIPTION

The CDP operates a switch outside the liquid: The flow drives the paddle. A magnet on top of paddle actuates a Reed contact, located outside the fluid. The reverse movement of the paddle is generated by a leaf-spring.

These controllers offer a simple, reliable and inexpensive solution for flow monitoring in pipelines.

CDP controllers are mounted in-line, pipes up to ND 50 with a Tee, BSPF threads. For larger diameters, CDP must be mounted on-line, on an adaptor BSP 1/2" female thread.

Accessories:

- The Reed contact has a low switching power:

The use of a relay ES 2001 (doc. 250-02) will protect the Reed and allows a remote loop signal with greater breaking capacity on a change-over relay output (500 VA/ 250 V A / 5A - 1A/ 125 V DC/ 40 W).

TECHNICAL FEATURES

Body	AISI 316 Ti Brass
Seal	FPM on stainless steel version NBR on brass version
Temperature limit	110 °C (other on request)
Ambient temperature	70 °C
Pressure limit	25 bar
Fittings	DN 10 to DN 50: Tee with BSP female threads ND 50 and larger: male thread BSP 1/2"
Contact output	N.O. or N.C. according the Reed contact orientation
Switching power	230 V / 1.5 A / 80 W / 90 VA max.
Output cable	PVC; 3-wire; 1 mm ² ; 1.5 m long
Trigger point adjustment	±15 % of table values, horizontal pipe; See next page
Protection	IP 65

Caution:

Thresholds are for water at 20 °C and for a flow in horizontal pipe. Mounting could be on a vertical pipe with ascending flow; Then, threshold value will be greater than the one from the table. The pipe slope of a flowing down piping must be less than 40 %.

BAMO INTERNATIONAL

22, Rue de la Voie des Bans · Z.I. de la gare · 95100 ARGENTEUIL

Tel +33 (0)1 30 25 83 20 Web www.bamo.eu

Fax +33 (0)1 34 10 16 05 E-mail export@bamo.fr

Paddle flow controller
CDP

DEB

710-01 /1

10-12-2019

D-710.01-EN-AC

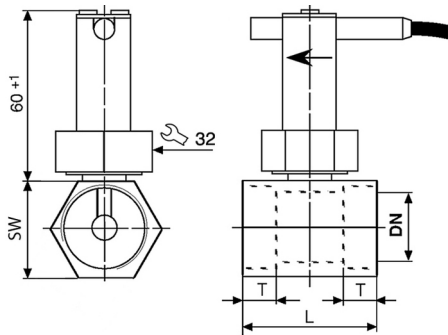
CODE NUMBERS AND REFERENCES

Code	Description	ND	Fitting	Body	Switching flow ranges (Water)		Flow max. [l/min]
					Closing [l/min]	Opening [l/min]	
710 100	CDP-10 L 3/8"	10	3/8"	Brass	2.7 ... 4.5	1.7 ... 3.5	40
710 115	CDP-15 L 1/2"	15	1/2"		4.5 ... 6.6	3.0 ... 5.5	45
710 120	CDP-20 L 3/4"	20	3/4"		8.5 ... 12.0	6.5 ... 11.0	80
710 125	CDP-25 L 1"	25	1"		13 ... 20	11 ... 19	130
710 132	CDP-32 L 1 1/4"	32	1 1/4"		17 ... 26	15 ... 25	160
710 140	CDP-40 L 1 1/2"	40	1 1/2"		28 ... 45	27 ... 43	300
710 150	CDP-50 L 2"	50	2"		45 ... 58	43 ... 56	500
710 152	CDP-52 L 1/2"	> 50	1/2"		44 ... 65	40 ... 60	500
710 200	CDP-10 l 3/8"	10	3/8"	AISI	2.7 ... 4.5	1.7 ... 3.5	40
710 215	CDP-15 l 1/2"	15	1/2"		4.5 ... 6.6	3.0 ... 5.5	45
710 220	CDP-20 l 3/4"	20	3/4"		8.5 ... 12.0	6.5 ... 11.0	80
710 225	CDP-25 l 1"	25	1"		13 ... 20	11 ... 19	130
710 232	CDP-32 l 1 1/4"	32	1 1/4"		17 ... 26	15 ... 25	160
710 240	CDP-40 l 1 1/2"	40	1 1/2"		28 ... 45	27 ... 43	300
710 250	CDP-50 l 2"	50	2"		45 ... 58	43 ... 56	500
710 252	CDP-52 l 1/2"	> 50	1/2"		44 ... 65	40 ... 60	500

Spare part:

710 370	CDP-370	Replacement contact for CDP series; Output cable, 1.5 m long
---------	---------	--

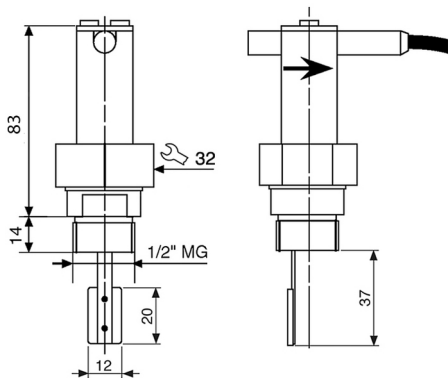
DIMENSIONS



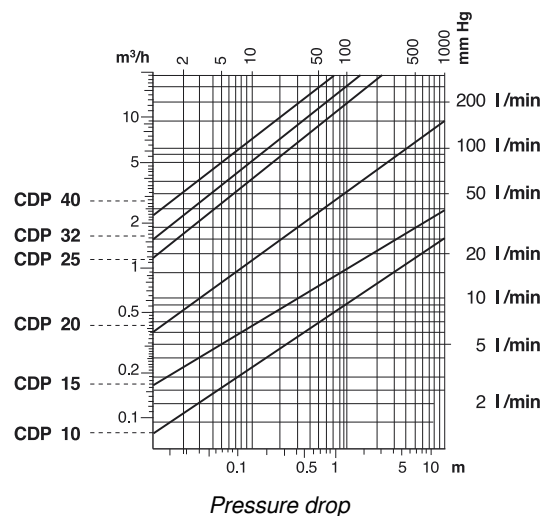
CDP 10 / 15 / 20 / 25 / 32 / 40 / 50

DN	10	15	20	25	32	40	50
T	11	11	11	15	15	15	15
Brass version:							
L	50	50	50	50	50	50	50
SW	30	30	30	37	46	52	70
AISI 316 version:							
L	50	50	50	62	64	70	110
SW	30	30	30	-	-	-	-

Dimensions in mm



CDP 52



BAMO

INTERNATIONAL

22, Rue de la Voie des Bans · Z.I. de la gare · 95100 ARGENTEUIL

Tel +33 (0)1 30 25 83 20 Web www.bamo.eu

Fax +33 (0)1 34 10 16 05 E-mail export@bamo.fr

Paddle flow controller CDP

DEB

710-01/2

10-12-2019

D-710.01-EN-AC