

THERMOMETERS

BIMETAL TEMPERATURE GAUGE - T-02

Temperature

Measurement & Monitoring



DESCRIPTION

The bimetal thermometer is manufactured in accordance with the EN 13190 standard which meets the high requirements of the process industries. Sheath and case are made of stainless steel. To allow fitting to the process, different installation lengths and process connections are available.

It is suitable for requirements of resistance against aggressive media. Especially in the chemical and petrochemical, refinery, food & beverages industries, the temperature measuring instrument manufactured from stainless steel is used successfully. Through the high ingress protection of the thermometer (IP 65) and its liquid damping, operation under high vibration conditions is possible.

FEATURES

- ✓ Stainless steel case & stem
- ✓ Dial size DN80 / 100 / 125 / 150
- ✓ EN 13190 standard
- ✓ Oil fillable
- ✓ Back / Bottom / Adjustable Angle
- ✓ Thermowell as optional
- ✓ External zero adjustment

TECHNICAL FEATURES

Case, bezel & clamp	AISI 304 SS, bayonet lock type
Sensing element	Coiled bimetal
Dial	Aluminium, standard 80mm (other size on request)
Pointer	Aluminium, black colored
Zero adjustment	On the rear back by screw adjustment
Window	Sheet glass
Gasket	Neoprene rubber
Stem & connection	AISI 316 SS, Ø 8mm, standard length 100mm (other lengths on request)
Process mounting	Center back (standard) / Direct bottom / Center back with adjustable angle
Process Connection	½" BSP/NPT male thread
Over range limit	Up to 120°C: 100% f.s / 160 to 300°C: 50% f.s / 400 to 500°C: 510°C
Thermowell	PVC (optional)
Scale	0 to 100°C (other range on request)
Protection class	IP65 – EN 60529 / IEC 529

I-SYSTEM MEASUREMENT
www.ismesb.com



THERMOMETERS
BIMETAL TEMPERATURE GAUGE - T-02

09-2021

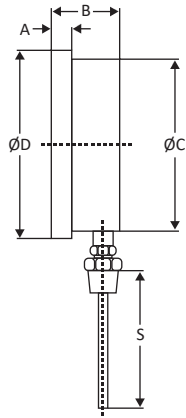
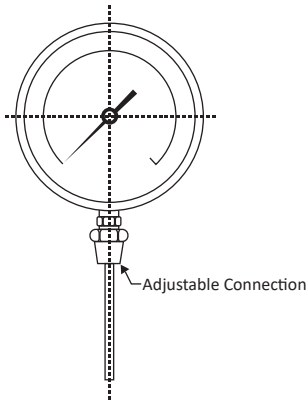
I-SYSTEM

403002

I-SYSTEM

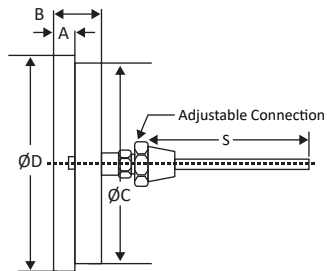
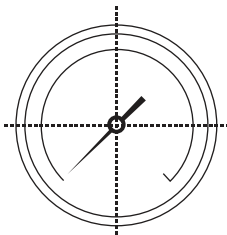
403/002

DIMENSION/DRAWING



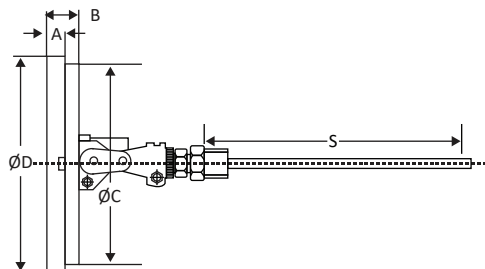
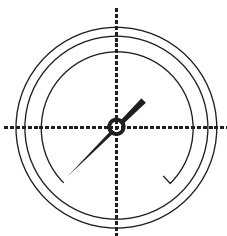
DIRECT BOTTOM

NS	A	B	ØC	ØD	Approx. Wt.#
100	12	48	100	111	500.0
125	15	48	119	129	750.0
150	15	49	149	161	1000.0



CENTER BACK

NS	A	B	ØC	ØD	Approx. Wt.#
100	12	18	100	111	350.0
125	15	20	119	131.5	500.0
150	15	25.5	149	161	750.0



CENTER ADJUSTABLE ANGLE

NS	A	B	ØC	ØD	Approx. Wt.#
100	12.5	19	100	111	750.0
125	15	23	119	129	900.0
150	15	23	149	161	1000.0

I-SYSTEM MEASUREMENT
www.ismesb.com



THERMOMETERS
BIMETAL TEMPERATURE GAUGE - T-02
I-SYSTEM

09-2021

403002

I-SYSTEM

403/002